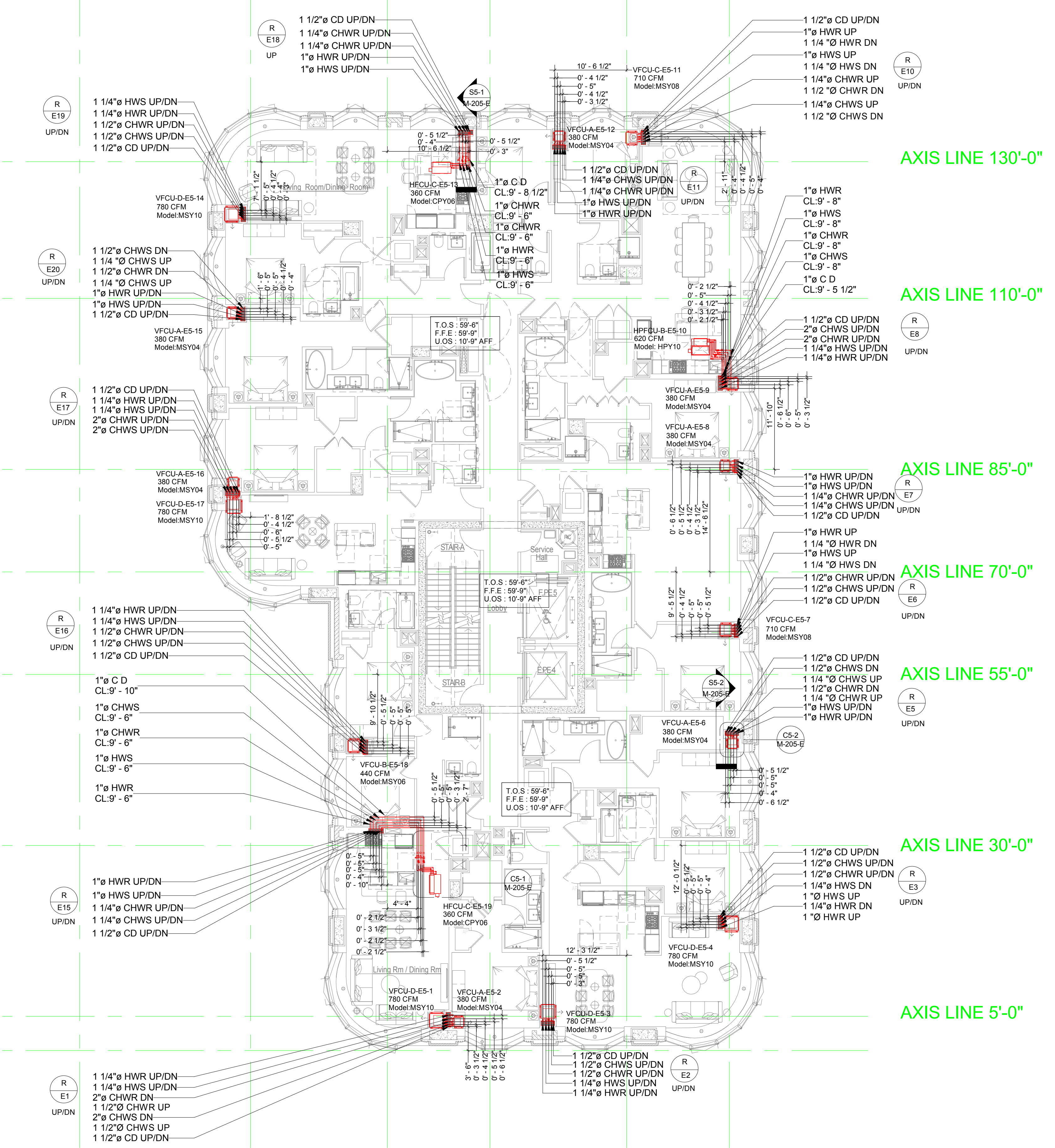


AXIS LINE 225'-0"
 AXIS LINE 250'-0"
 AXIS LINE 270'-0"
 AXIS LINE 285'-0"
 AXIS LINE 305'-0"
 AXIS LINE 320'-0"



AXIS LINE 225'-0"
 AXIS LINE 250'-0"
 AXIS LINE 270'-0"
 AXIS LINE 285'-0"
 AXIS LINE 305'-0"
 AXIS LINE 320'-0"

NOTE:
 - THICKNESS OF SLAB - 12"
 - CL - CENTER LINE ELEVATION OF PIPE SHOULD BE TAKEN FROM FLOOR LEVEL OF RESPECTIVE AREA

AXIS LINE 175'-0"

AXIS LINE 155'-0"

AXIS LINE 130'-0"

AXIS LINE 110'-0"

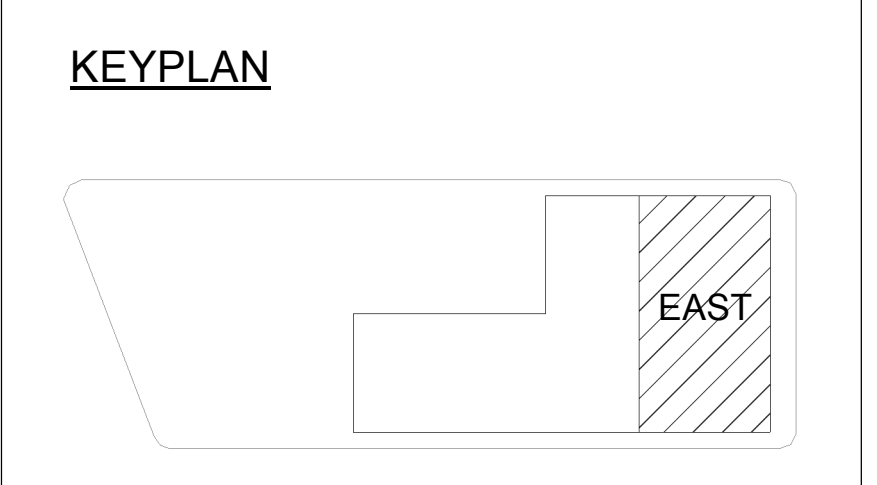
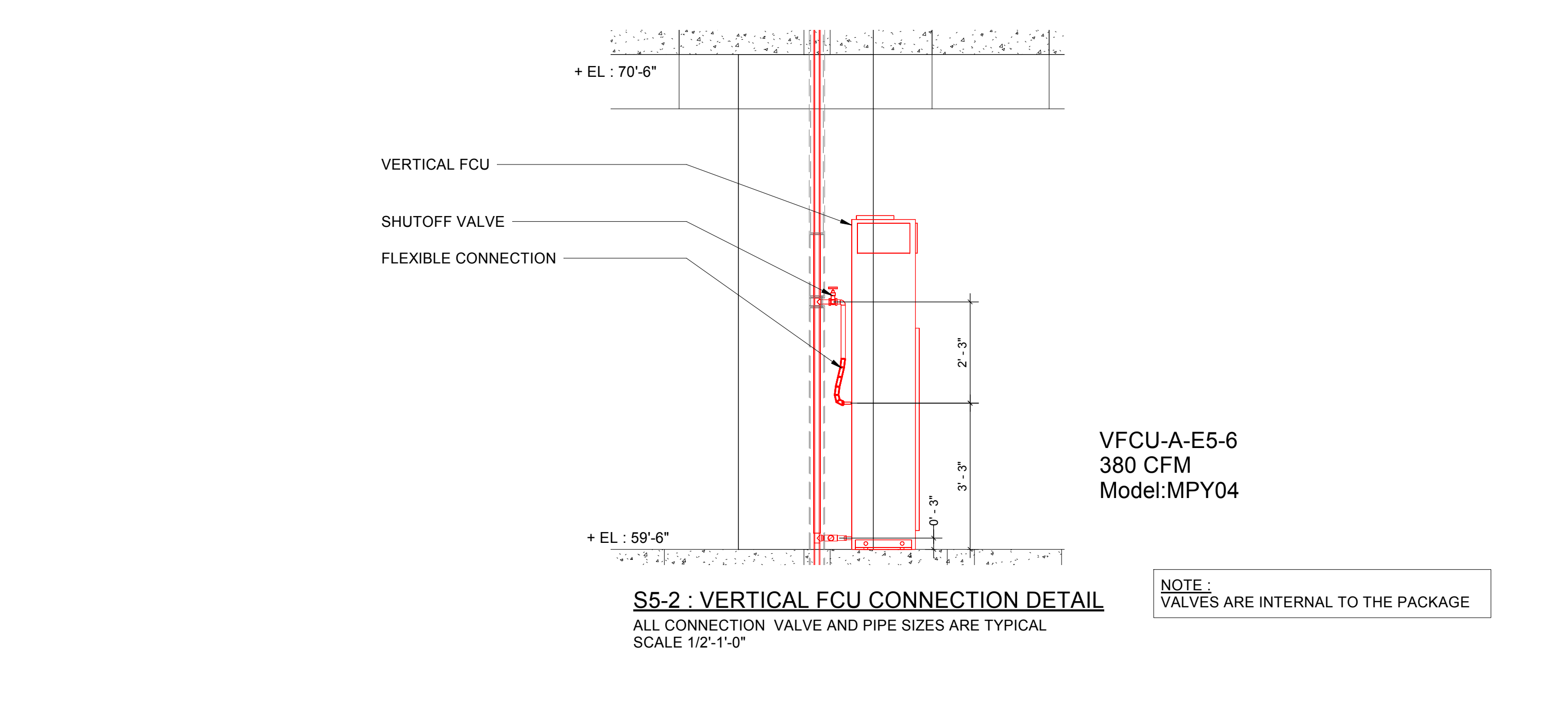
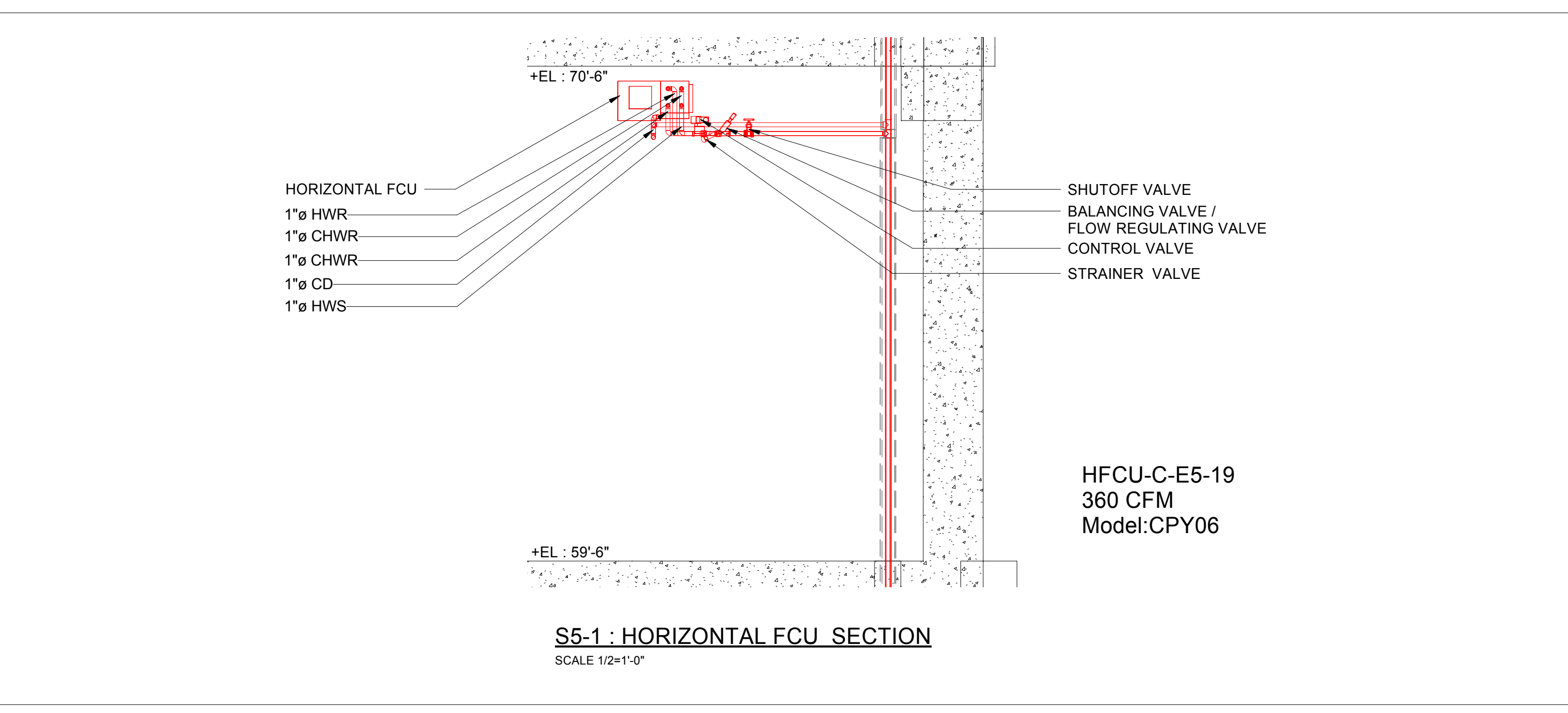
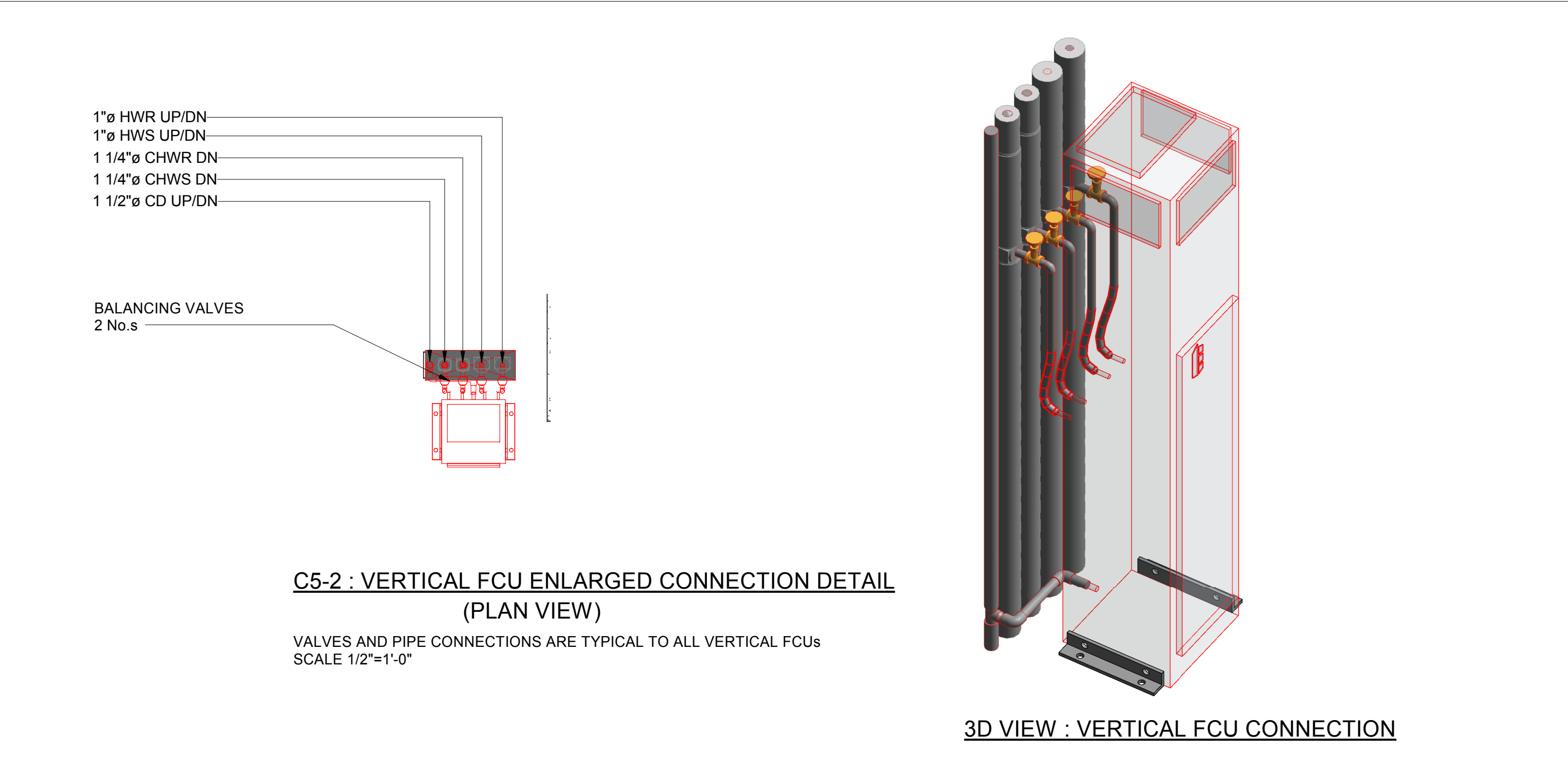
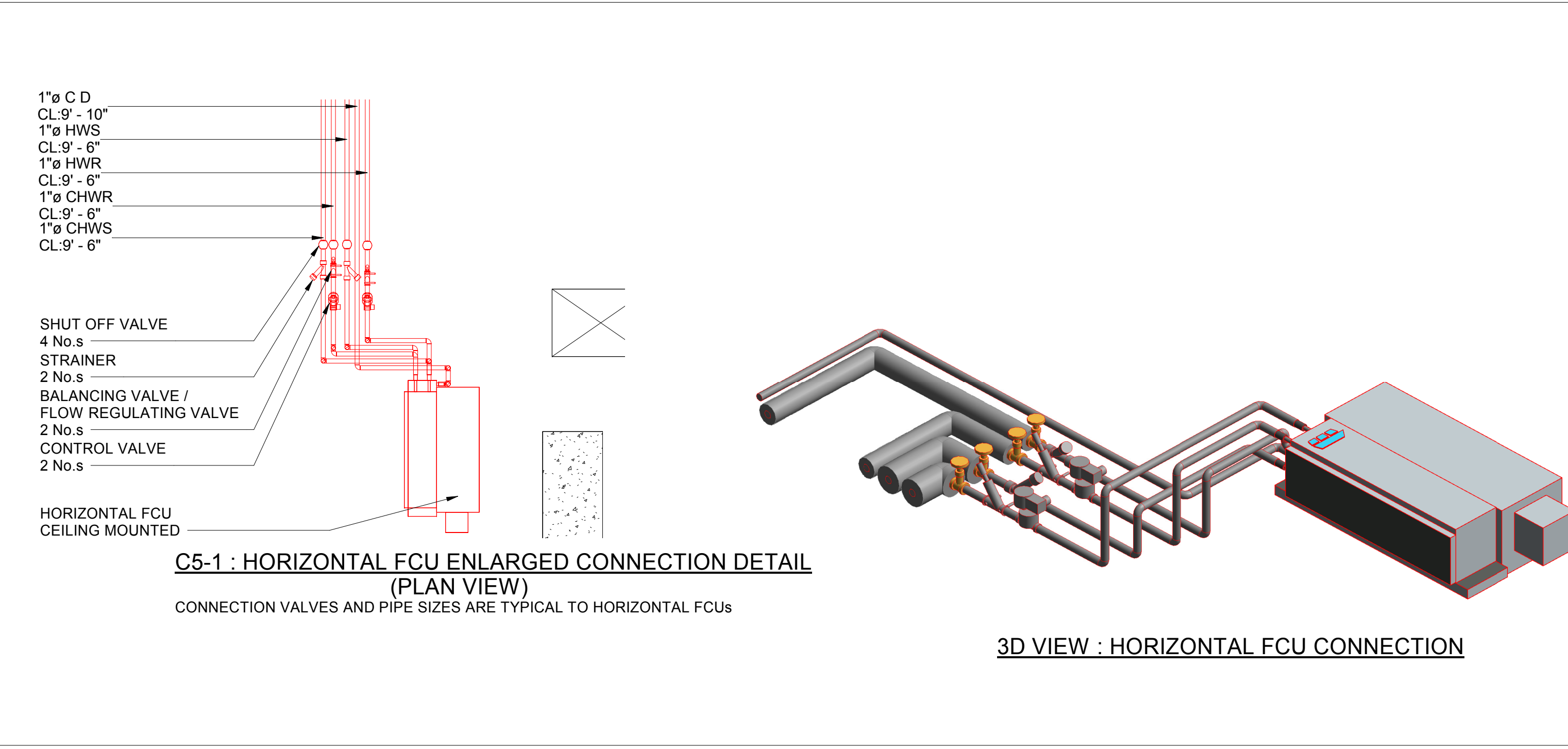
AXIS LINE 85'-0"

AXIS LINE 70'-0"

AXIS LINE 55'-0"

AXIS LINE 30'-0"

AXIS LINE 5'-0"



LEGEND

HWS	HOT WATER SUPPLY
HWR	HOT WATER RETURN
CHWS	COLD WATER SUPPLY
CHWR	COLD WATER RETURN
CD	CONDENSATE DRAIN
CL	CENTER LINE
UH	UNIT HEATER
GPM	GALLONS PER MINUTE
PCHWP	PORTABLE CHILLED WATER PUMP
PCWP	PORTABLE COLD WATER PUMP
CH	CHILLER UNIT
PFHX	HEAT EXCHANGER
FCU	FAN COIL UNIT
AHU	AIR HANDLING UNIT
DN	DOWN
RD	RISER DRAIN
PG	PRESSURE GAUGE
TG	TEMPERATURE GAUGE
YS	Y-STRAINER
MCV	MOTORIZED CONTROL VALVE
PV	PLUG VALVE
BV	BALANCING VALVE
GV	GATE VALVE
BTM	BTU METER
SOV	SHUT OFF VALVE
AD	ACCESS DOOR

No.	Description	Date
1	AS PER ADDENDUM #4	09/05/18
2	AS PER ASI #003	10/23/18
3	AS PER BULLETIN 1	11/08/18
4	SUBMITTED FOR REVIEW	12/18/18
5	UPDATED AS PER MARKUPS	12/21/18
6	UPDATED AS PER MARKUPS	03/08/19

MECHANICAL CONTRACTOR

DRAFTING COMPANY

DRAWING TITLE

FIFTH FLOOR EAST MECH PIPING SHOP DRAWING

PROJECT INFORMATION

Project Number

Date 03/08/19

Drawn By Author

Checked By Checker

M-205-E

Scale 1/8"=1'-0"