

2 3D VIEW
SCALE: NTS

THIS DRAWING IS A REPRESENTATION OF A PROPOSED LAYOUT. IT IS THE CONTRACTOR'S RESPONSIBILITY TO VERIFY AND REVIEW PRIOR TO FINAL SUBMISSION. CAD/SULTANTS IS NOT RESPONSIBLE FOR DISCREPANCIES IN THE FIELD. ANY CORRECTIONS TO THE DRAWING IS REQUIRED BY THE CONTRACTOR TO ADVISE CAD/SULTANTS BY A RED-LINED SKETCH OR VERBAL DESCRIPTION FOR FINAL SUBMISSION BEFORE FABRICATION & INSTALL. ANY CHANGE FROM ORIGINAL ENGINEERING CONTRACT DRAWING MAY RESULT IN ADDITIONAL COSTS FOR RE-DRAFTING SUCH AS CHANGE ORDERS, DESIGN CHANGES, EQUIPMENT CHANGE OUT OR RELOCATIONS. ADDITIONAL SURVEY MAY BE NECESSARY. CAD/SULTANTS IS NOT RESPONSIBLE FOR ANY BACK CHARGES.

NOTE TO ARCHITECT OR ENGINEER

NO.	DATE	DESCRIPTION
1	08/10/16	FOR APPROVAL

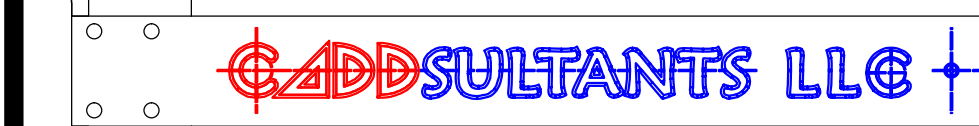
MECHANICAL CONTRACTOR:

M&S MECHANICAL

855 CONKLIN STREET SUITE F
FARMINGDALE, NY 11735

DRAFTING COMPANY:

Professional Drafting Services
Certified / Insured CAD Specialists
Marc W. Hoffman



167 Allen Road
Rockville Centre NY, 11570
Contact: 646.641.2512
Email: Cadd@sultants@gmail.com

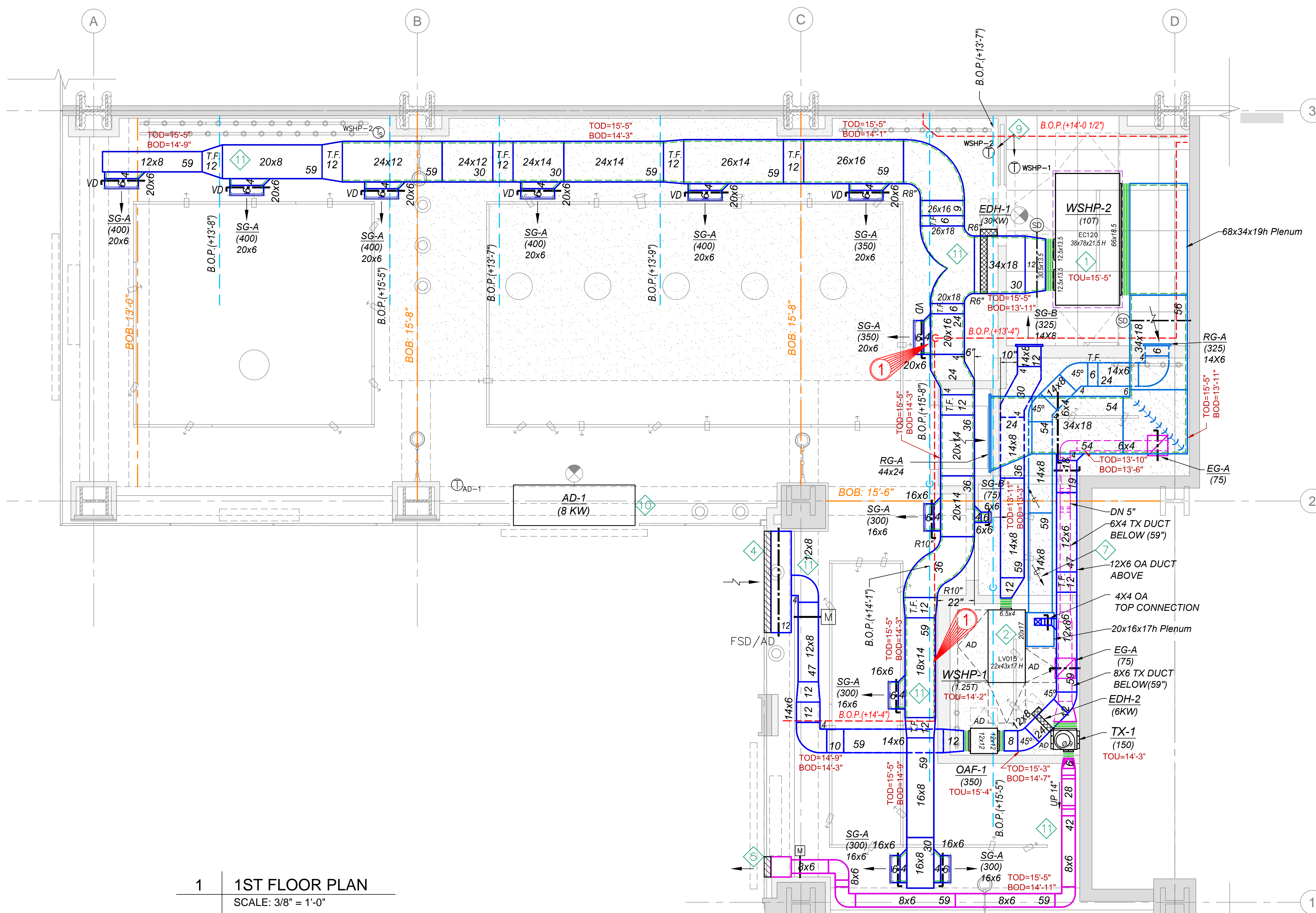
DRAWING NAME:

**1ST FLOOR
SHEET METAL PLAN**

PROJECT INFORMATION:

JOE & THE JUICE
1350 AVENUE OF THE AMERICAS
NEW YORK, NY

Drawn By: CZ Chkd By: MH
Scale: 3/8"=1'-0" Date: 08/10/16 Drawing Number



1 1ST FLOOR PLAN
SCALE: 3/8" = 1'-0"

- REFERENCE NOTES**
- 1. PROVIDE 10 TON WATER SOURCE HEAT PUMP. PROVIDE WITH AUXILIARY STAINLESS STEEL DRIP PAN, LEAK DETECTORS, VIBRATION ISOLATION, THERMOSTAT, BUTTON TYPE TEMPERATURE SENSOR, AND ASSOCIATED CONDENSER WATER PIPING. CONTRACTOR TO MAINTAIN UNIT CLEARANCE ACCORDING TO MANUFACTURER'S RECOMMENDATION. PROVIDE UNIT ACCESS DOORS AS REQUIRED.
 - 2. PROVIDE 1.25 TON WATER SOURCE HEAT PUMP. PROVIDE WITH AUXILIARY STAINLESS STEEL DRIP PAN, LEAK DETECTORS, VIBRATION ISOLATION, THERMOSTAT, BUTTON TYPE TEMPERATURE SENSOR, AND ASSOCIATED CONDENSER WATER PIPING. CONTRACTOR TO MAINTAIN UNIT CLEARANCE ACCORDING TO MANUFACTURER'S RECOMMENDATION. PROVIDE UNIT ACCESS DOORS AS REQUIRED.
 - 3. NOT USED.
 - 4. PROVIDE 5 SQ. FT. OUTSIDE AIR LOUVER WITH 50% FREE AREA. PROVIDE WITH FIRE SMOKE DAMPER AND MOTORIZED DAMPER AT OPENING. OUTSIDE AIR INTAKE OPENING SHALL BE LOCATED 10 FT. HORIZONTALLY FROM ANY CONTAMINATED DISCHARGE SOURCES. LOUVER SHALL BE NO LESS THAN 10 FT. ABOVE GRADE. COORDINATE EXACT LOCATION AND FINISH WITH ARCHITECT.
 - 5. PROVIDE 0.5 SQ. FT. TOILET EXHAUST LOUVER WITH 50% FREE AREA. LOUVER SHALL BE NO LESS THAN 10 FT. ABOVE GRADE. COORDINATE EXACT LOCATION AND FINISH WITH ARCHITECT.
 - 6. CONNECT TO BUILDING PROVIDED CONDENSER WATER CONNECTIONS. COORDINATE EXACT POINT OF CONNECTION IN THE FIELD. COORDINATE WITH BUILDING ENGINEER.
 - 7. PROVIDE 1" UNDERCUT AT BATHROOM DOOR. COORDINATE WITH ARCHITECT.
 - 8. SPILL CONDENSATE TO MOP/SINK LOCATED IN THE BACK OF HOUSE.
 - 9. PROVIDE 7-DAY WALL MOUNTED PROGRAMMABLE THERMOSTAT AND TEMPERATURE SENSOR. COORDINATE FINAL LOCATION WITH ARCHITECT AND OWNER.
 - 10. PROVIDE ELECTRIC HEATED AIR CURTAIN WITH ADJUSTABLE THERMOSTAT. INSTALL AS PER MANUFACTURER'S RECOMMENDATIONS. REFER TO SCHEDULE FOR MORE INFORMATION.
 - 11. ALL EXPOSED DUCTWORK TO BE PAINTABLE.
 - 12. NOT USED.
 - 13. NOT USED.
 - 14. PROVIDE CONDENSER WATER PUMPS WITH LEAD-LAG OPERATION. PROVIDE WITH VIBRATION ISOLATION AND REQUIRED CONTROLS AS PER MANUFACTURER'S RECOMMENDATION. REFER TO SCHEDULES FOR MORE INFORMATION.